

North Sea, Denmark

[HOME](#) > [CATEGORIES](#) > [COMPLETED PROJECTS](#) > [NORTH SEA, DENMARK](#)

240MVA onshore power transformer control cabinet. The production and prefabrication of 3 switchboards was part of a project aimed at integrating energy from a wind farm located in the North Sea with the UK transmission network. During our cooperation since 2014, we have made over 20 control cabinets that were sent to wind farm areas in the North Sea.

Supply voltage: 400/230V AC

Control voltage: 24V, 110V DC

Rated current: 40A

Standard: British

Tightness class: IP66

Corrosion protection: C5M-H Onshore

Operating temperature range: -25°C to +40°C

IMPLEMENTATION DATE: MAY 2019

Switchboard:

Dimensions:1400 mm x 1400 mm x 400 mm

Type:SZS-KO – large-size housing made of acid-resistant steel, IP66

Color:

outside: RAL7032,

inside: RAL9003

Manufacturer:Radiolex

118-631.001 – **SZS-KO 1400*1400*400** – Switchboard housing – manufacturer Radiolex

ABB equipment used:

1SAM250000R1007 – **MS116-2.5** – Motor switch 3P 0.75kW 1.6-2.5A

1SBH137001R1322 – **NF22E-13** – Contactor 2NO/2NC 6A 230V AC/DC

1SBH137001R1340 – **NF40E-13** – Contactor 4NO 16A 100-250V DC

1SVR630794R3300 – **CM-PVS** – 3-phase voltage monitoring relay, 2NO/2NC contacts

1SVR730830R0500 – **CM-ESS.MS** – Voltage monitoring relay 24-240V AC/DC

2CCA703050R0001 – **E218-16-11** – Modular switch 16A 250V AC

STEGO equipment used:

01140.0-00 – **KTO011** – Thermostat 1NC, 0 to +60°C

02527.0-10 – **SL025** – Lamp, Slimline series 230V

03503.0-01 – **SD035 UK** – Power socket 13A 250V AC

14007.0-00 – **HG140** – Solid-state heater 150W 120-240V AC/DC

Apparatus from other manufacturers used:

111-DIN-6-LC-Duplex – **111-DIN-6-LC-Duplex** – Fiber optic distribution box manufactured by OMI Solutions

2866747 – **QUINT-PS-1AC/24DC/3.5** – Power supply 3.5A 24V DC man. PhoenixContact

4G10-69-U – **4G10-69-U** – Cam switch 1-2 4P 10A manufactured by Apator

4G63-10-PK – **4G63-10-PK** – Cam switch 0-1 3P 63A manufactured by Apator

A900 – **A900 TEST LINK** – Oil testing board manufactured by Accurate

KXCBS11 – **KXCBS11** – Limit switch manufactured by Lovato

PCZ-529.3 – **PCZ-529.3** – Timer, scope: 1 year of production. F&F

GALERIA PRODUKTU WRAZ Z PRZYKŁADOWYMI REALIZACJAMI



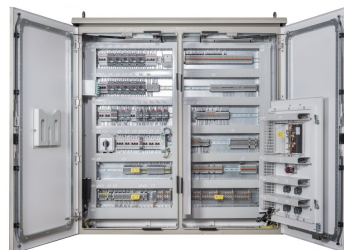
PROJEKTOWA KRAJOWA
DEPARTAMENT WARSZAWY

Radiolex



PROJEKTOWA KRAJOWA
DEPARTAMENT WARSZAWY

Radiolex



PROJEKTOWA KRAJOWA
DEPARTAMENT WARSZAWY

Radiolex



PROJEKTOWA KRAJOWA
DEPARTAMENT WARSZAWY

Radiolex

