

Double section 19 inch enclosure - NRS 2 IP 55

HOME > CATEGORIES > DOUBLE SECTION 19-INCH ENCLOSURE - NRS-2 IP 55

NRS-2 - is a double section wall-mounted enclosure, used for assembly of network systems in 19-inch spacing.

Type	Corrosivity category	Material	Coating
NRS-2	C2	steel sheet	RAL7035

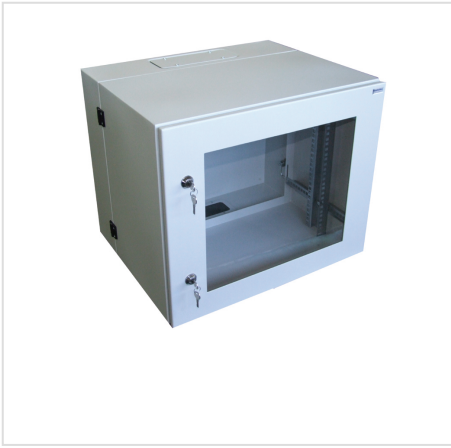
GENERAL INFORMATION:

- Ingress protection according to IP code: 55
- Impact resistance according to IK code: 10
- Operating temperature range: 0 - +80°C

BASIC DATA:

- Body: monobloc type, welded; double section
- Closure: hinged door with 105° opening angle; the possibility of independent change of the door opening direction; enclosures up to 500 mm height have one 1333 patent lock whereas higher enclosures have two locks of the same type; section closure is on the side wall in the form of two locks of the same type
- 19-inch rack: single; perforated, made of 2 mm thick galvanized steel sheet
- Cable entry: there are gland plates in the top and bottom
- Grounding: threaded grounding studs in the door and enclosure body
- Other information: The door has an internal stiffening made of perforated z-bars to facilitate mounting of additional elements.

GALERIA PRODUKTU WRAZ Z PRZYKŁADOWYMI REALIZACJAMI



DATA SHEET

DOCUMENTS



Declaration of compliance for Radiolex products [Kliknij aby pobrać](#)

The following table presents enclosures according to the description

No.	Dimensions (W × H × D / front chamber depth (mm) - Rack Unit height)	Catalogue No. transparent door	Catalogue No. steel door
1	600 × 320 × 500 / 350 - 6U	409-001	410-001
2	600 × 500 × 500 / 350 - 10U	409-002	410-002
3	600 × 600 × 500 / 350 - 12U	409-003	410-003
4	600 × 720 × 500 / 350 - 15U	409-004	410-004
5	600 × 850 × 500 / 350 - 18U	409-005	410-005

