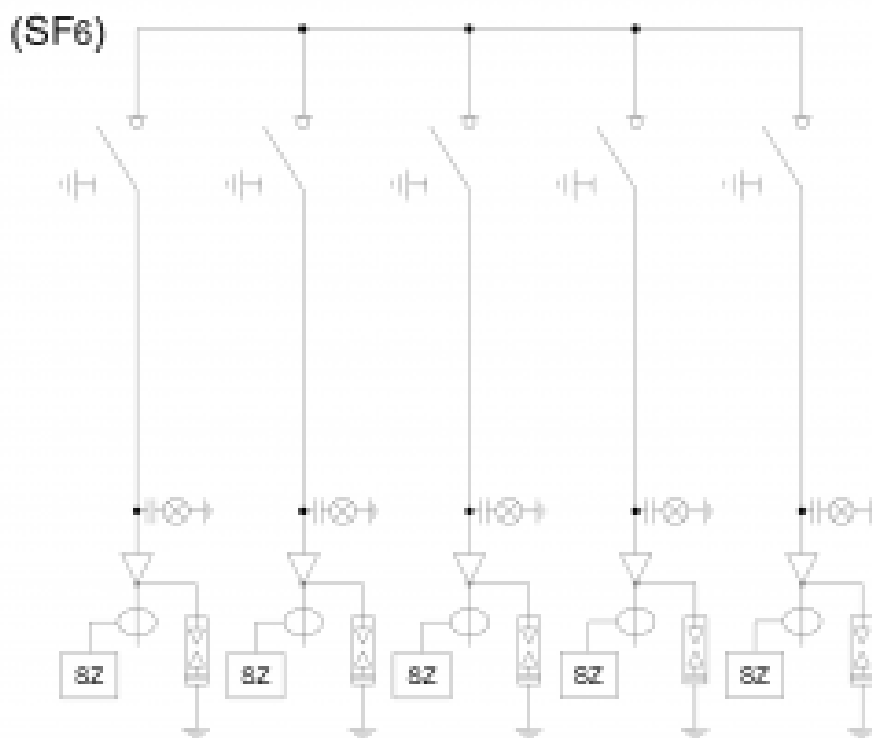


Cable joints

HOME > CATEGORIES > CABLE JOINTS

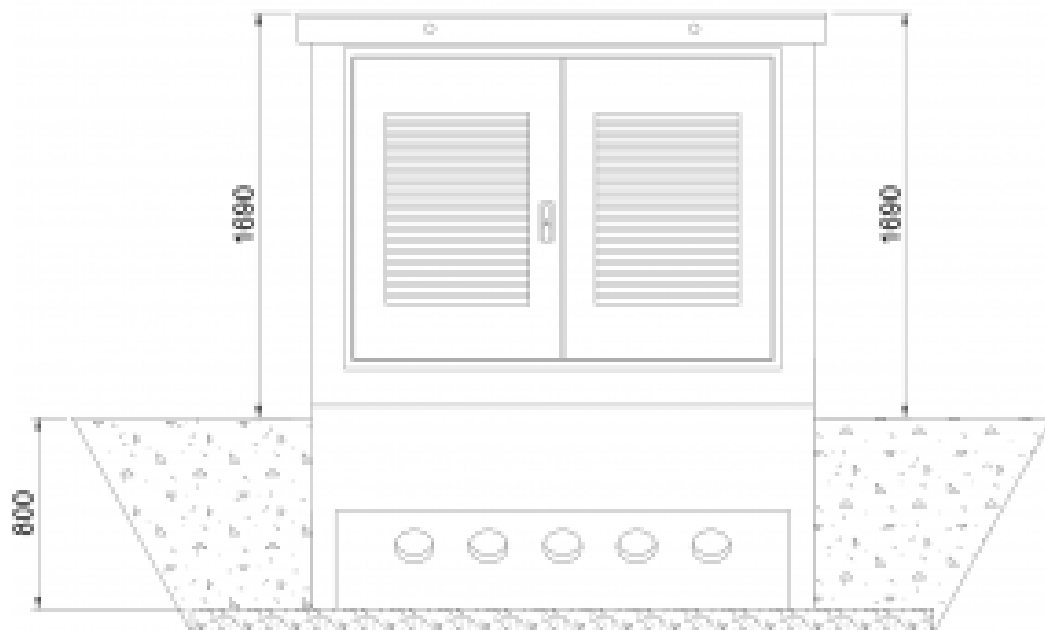
RDX-ZKSN type cable connectors are designed to work with medium voltage cable networks and overhead networks for both professional and industrial power plants. The housing consists of the main body and a concrete roof. As standard, it is designed to be equipped with a 3-pole or 4-pole MV switchgear. The MV cable connector is available in two sizes: 2100x1300 mm and 2900x1600 mm. The above-ground height for each type is 1650 mm including the roof. Due to their small dimensions, the joints are transported to their destination ready for installation in one piece.

EXAMPLE OF CABLE JUNCTION DIAGRAM



DRAWING OF THE CABLE JOINT

Front złącza



GALERIA PRODUKTU WRAZ Z PRZYKŁADOWYMI REALIZACJAMI



